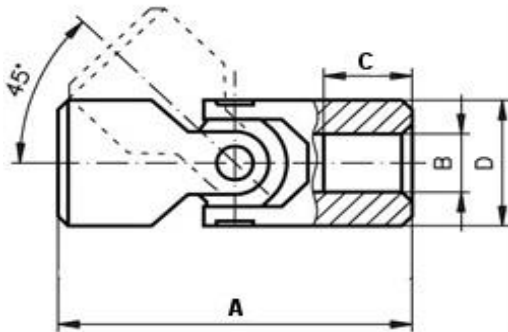




UNIVERSAL JOINT FOR SLOW RUNNING DRIVES, WITH BORE or NO BORE OPTION

Steel C 45. Max. Operating Angle 45°. Their scope of application is limited to slow running drives. The respective maximum speeds depend on operating angle and load, but must never exceed 1000 rpm. The maximum torque values listed in the table are limits, which must neither be exceeded. They may only be used to their full extend with intermittent operation or at low speed. The following limit applies: The product of speed (rpm) x working angle (degrees) may not exceed the reference number 500. This means, e.g., for a working angle of 10 degrees a max. speed of 50 rpm. If, however, the maximum torque is not taken to the limit, speed and working angle can be larger. At 0.5 x max. torque applies: speed x working angle, smaller or equal 4.000. In case of doubt choose larger joint. At continuous operation the cardan joints need to be sufficiently lubricated. If no drip-feed lubrication is possible, lubricate the joints at least once a day. Another possibility is to cover the joints with a bellow, filled with a suitable lubricant.



Also Available
Optional Keyways
Custom Bores Sizes
Plastic Universal Joints

PART#	B - H7	PART#	B - H7	D	A	C	TORQUE MAX (Nm)
ULAS	no bore	UL6S	6	10	40	12	2
ULBS	no bore	UL8S	8	13	42	12	6
ULCS	no bore	UL10S	10	16	52	15	8
ULDS	no bore	UL12S	12	20	62	18	20
ULES	no bore	UL16S	16	25	74	22	30
ULFS	no bore	UL20S	20	32	86	25	60
ULGS	no bore	UL22S	25	40	108	32	160
ULHS	no bore	UL25S	32	50	132	40	290
ULIS	no bore	UL30S	40	63	166	50	550