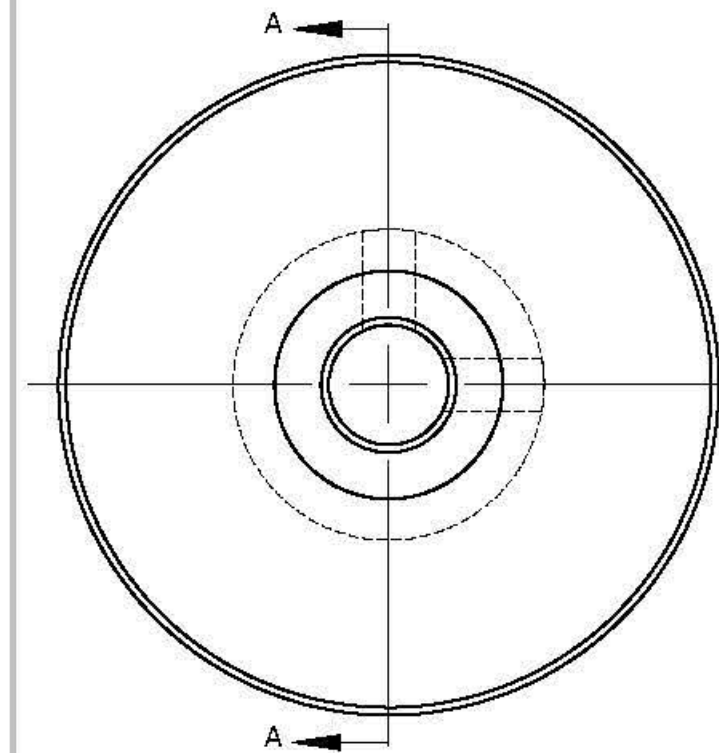
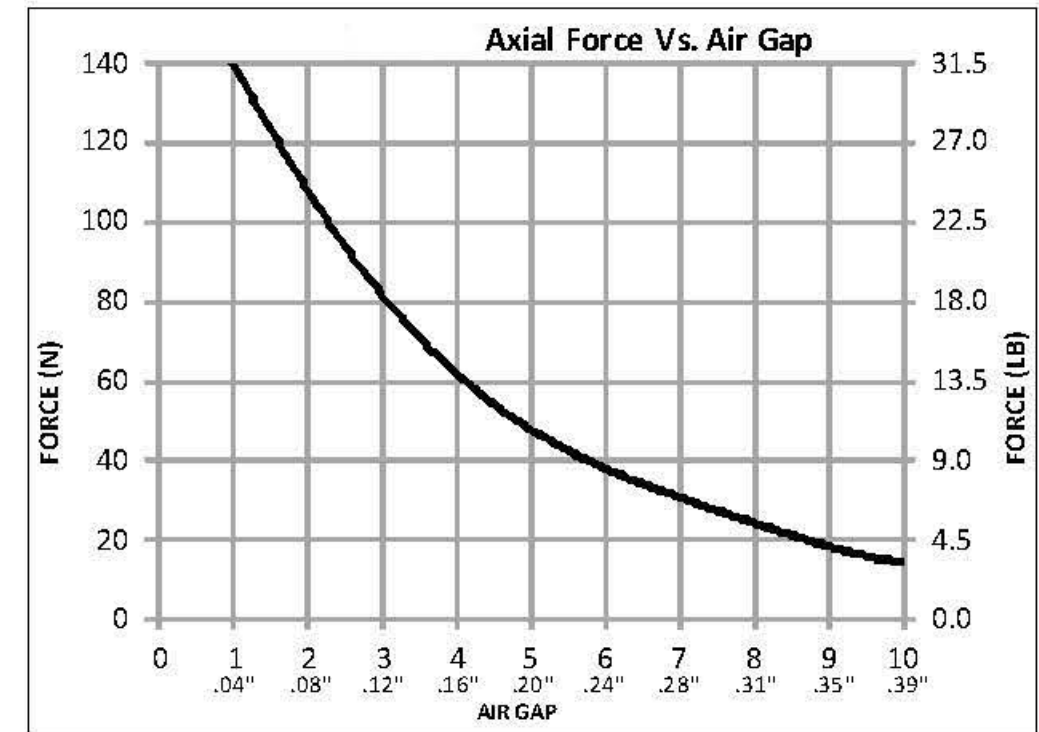
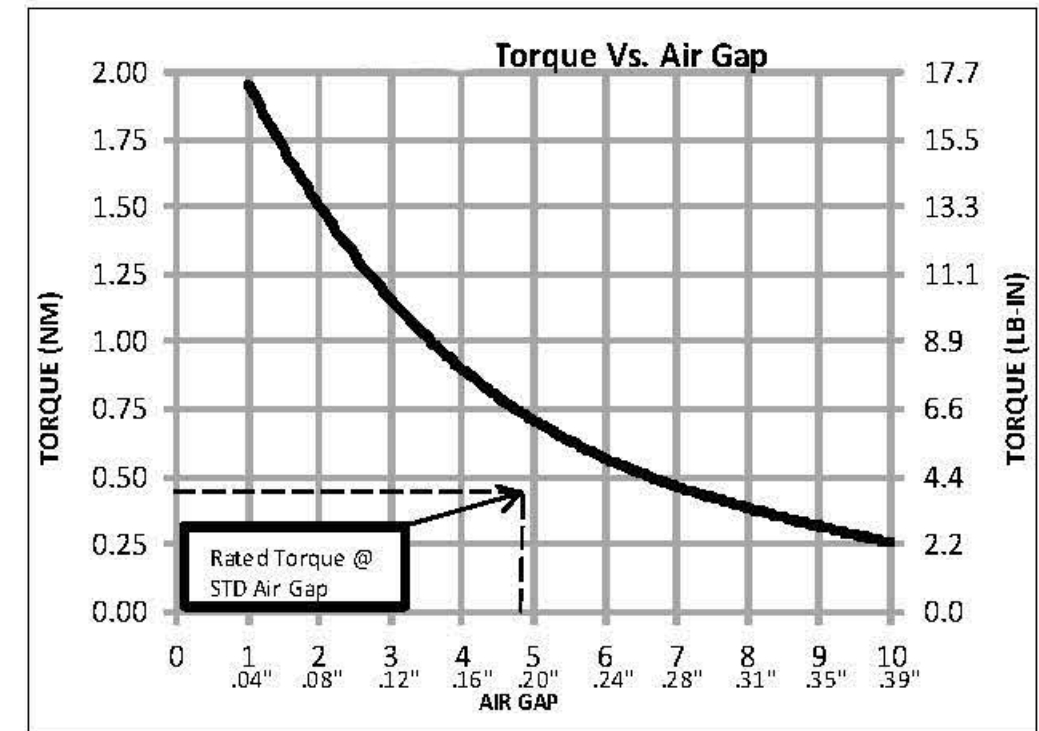
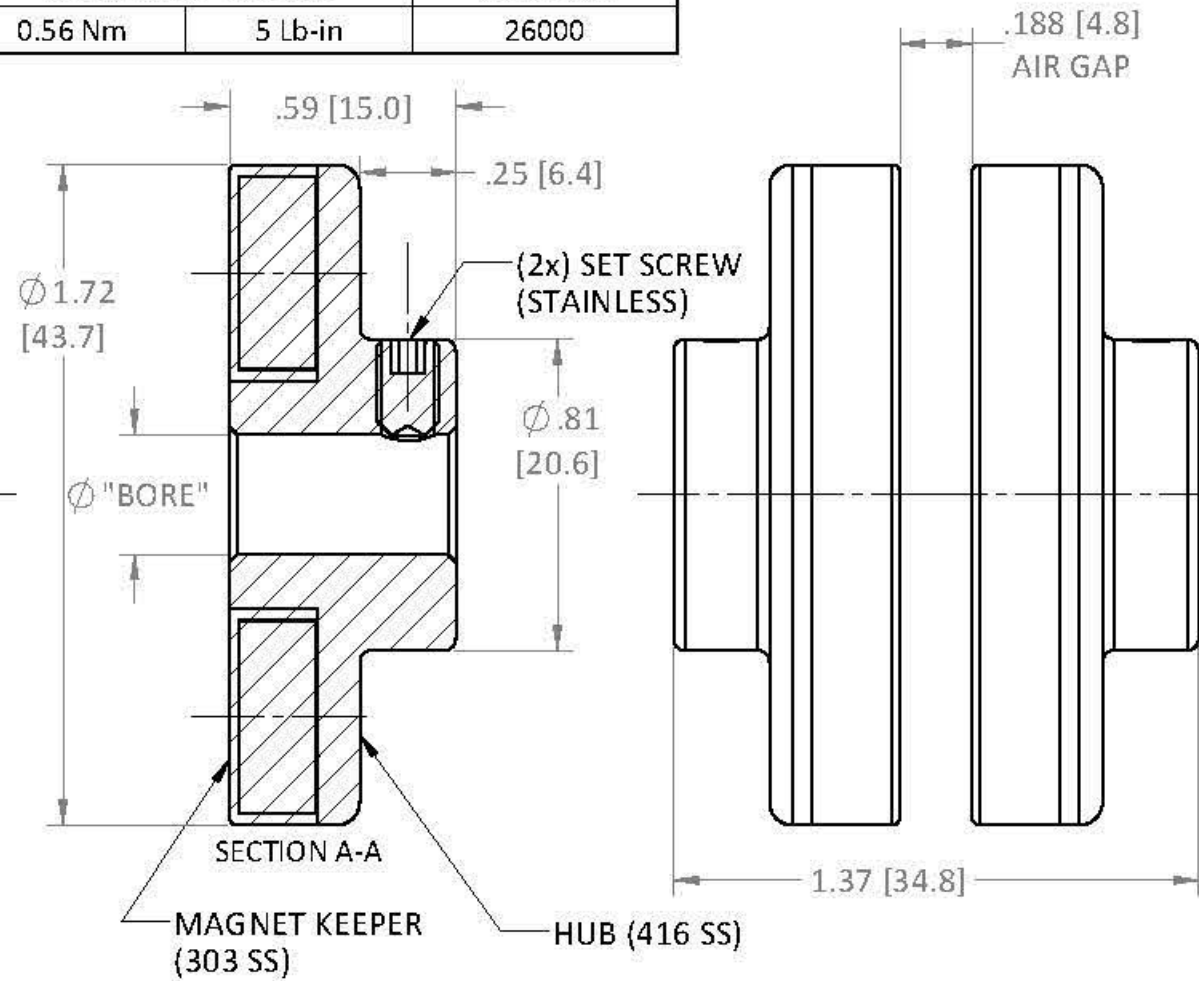


MODEL	RATED TORQUE @ STD. AIR GAP	BREAKAWAY TORQUE	MAX RPM
MDC 0.3	0.45 Nm	4 Lb-in	26000

REVISIONS			
REV.	ECN.	DESCRIPTION	DATE



COUPLING HALF:
WEIGHT: 0.22 Lbs (0.10 Kg)



MODEL	BORE		SET SCREW (2x)
MDC 0.3	mm ^{H8}	in ^{-0.001}	CUP POINT
	SOLID		
	4.76	.1875	#8-32 X 1/4
	5.00	.197	M4-0.7 x 6mm
	6.00	.236	M4-0.7 x 6mm
	6.35	.250	#8-32 X 1/4
	7.94	.3125	#8-32 X 1/4
	8.00	.315	M4-0.7 x 6mm
	9.53	.375	#8-32 X 1/4
	10.00	.394	M4-0.7 x 6mm

OTHER SIZES AVAILABLE; SPECIFY BORE

USED ON	SCALE 2:1	MATERIAL SEE PRT DWG
UNLESS OTHERWISE SPECIFIED:		FINISH SEE PRT DWG
ALL DIMENSIONS ARE IN INCHES TOLERANCES: DECIMAL: JX ± .01 - JXXX ± .005 ANGULAR: ± 1° GEN. CONCENTRICITY: .001 T.I.R. MACH. FILLETS: .010 R MACH. EDGES: .015 R OR CHMF. UNSPECIFIED RADII: .015 R IN MICROINCHES RMS 32 GEOMETRIC: TO MIL-STD. 8 REMOVE ALL BURRS & SHARP EDGES		DRAWN AMD 10/17/14 CHECKED DESCRIPTION DWG. NO. REV.
SIZE: B		