

SPLINE SHAFT

MATERIAL: C45 Steel & 1.4301 Cold Drawn Stainless Steel

LENGTHS AVAILABLE: 1000mm - 3000mm

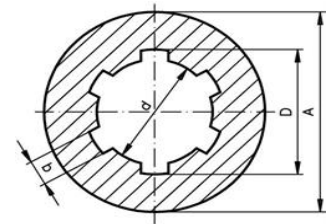
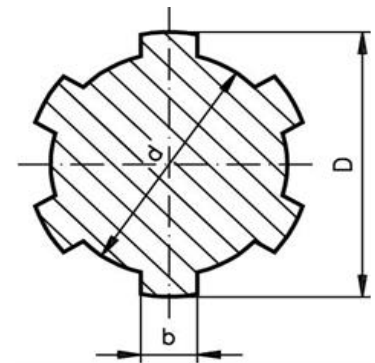
(longer lengths available per request)

TOLERANCES: Straightness 0.8 mm/m, torsion max. 0.5 mm/m.

A straightness of 0.1 mm/m can be produced on request.

SIZES IN MM

STEEL PART#	STAINLESS PART#	PROFILE	d	D	b	No. of Keys
S11-ST	S11-SS	11X14	11	14	3	6
S13-ST	S13-SS	13x16	13	16	3.5	6
S16-ST	S16-SS	16X20	16	20	4	6
S18-ST	S18-SS	18X22	18	22	5	6
S21-ST	S21-SS	21X25	21	25	5	6
S23-ST	S23-SS	23X28	23	28	6	6
S26-ST	S26-SS	26X32	26	32	6	6
S28-ST	S28-SS	28X34	28	34	7	6
S32-ST	S32-SS	32X38	32	38	6	8
S36-ST	S36-SS	36X42	36	42	7	8
S42-ST	S42-SS	42X48	42	48	8	8
S46-ST	S46-SS	46X54	46	54	9	8



SPLINE SHAFT ROUND HUBS

MATERIAL: C45 Steel, 1.4305 Stainless Steel & GC-CuSn7ZnPb Bronze

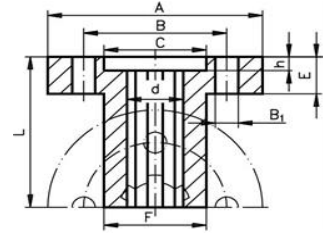
SIZES IN MM

STEEL PART#	STAINLESS PART#	BRONZE PART#	PROFILE	d-H7	D	b	A	LENGTH	No. of Keys
SRH11-ST	SRH11-SS	SRH11-BR	11X14	11	14	3	20	40	6
SRH13-ST	SRH13-SS	SRH13-BR	13x16	13	16	3.5	28	45	6
SRH16-ST	SRH16-SS	SRH16-BR	16X20	16	20	4	32	45	6
SRH18-ST	SRH18-SS	SRH18-BR	18X22	18	22	5	40	50	6
SRH21-ST	SRH21-SS	SRH21-BR	21X25	21	25	5	40	55	6
SRH23-ST	SRH23-SS	SRH23-BR	23X28	23	28	6	50	55	6
SRH26-ST	SRH26-SS	SRH26-BR	26X32	26	32	6	52	60	6
SRH28-ST	SRH28-SS	SRH28-BR	28X34	28	34	7	60	60	6
SRH32-ST	SRH32-SS	SRH32-BR	32X38	32	38	6	60	60	8
SRH36-ST	SRH36-SS	SRH36-BR	36X42	36	42	7	70	60	8
SRH42-ST	SRH42-SS	SRH42-BR	42X48	42	48	8	80	70	8
SRH54-ST	SRH54-SS	SRH54-BR	46X54	46	54	9	80	90	8



SPLINE SHAFT FLANGED HUB

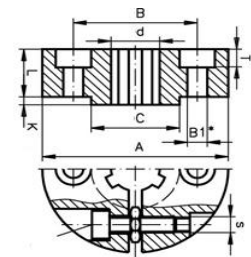
MATERIAL: C45 Steel, 1.4305 Stainless Steel & GC-CuSn7ZnPb Bronze .
With Mounting Holes - SIZES IN MM



STEEL PART#	STAINLESS PART#	BRONZE PART#	PROFILE	A	B	B1	C	F	d-H7	E	H	L
SFH11-ST	SFH11-SS	SFH11-BR	11X14	42	28	4.5	20	20	11	8	3	35
SFH13-ST	SFH13-SS	SFH13-BR	13x16	50	36	4.5	22	25	13	8	3	40
SFH16-ST	SFH16-SS	SFH16-BR	16X20	52	38	5.5	25	28	16	10	3	40
SFH18-ST	SFH18-SS	SFH18-BR	18X22	54	40	5.5	30	30	18	10	3.5	45
SFH21-ST	SFH21-SS	SFH21-BR	21X25	62	48	6.6	35	34	21	10	3.5	50
SFH23-ST	SFH23-SS	SFH23-BR	23X28	64	50	6.6	36	36	23	10	3.5	55
SFH26-ST	SFH26-SS	SFH26-BR	26X32	70	56	6.6	40	42	26	10	3.5	60
SFH28-ST	SFH28-SS	SFH28-BR	28X34	78	60	9	46	45	28	12	3.5	60
SFH32-ST	SFH32-SS	SFH32-BR	32X38	82	65	9	50	50	32	12	3.5	60
SFH36-ST	SFH36-SS	SFH36-BR	36X42	90	70	9	52	52	36	16	4	80
SFH42-ST	SFH42-SS	SFH42-BR	42X48	95	75	11	60	60	42	16	4	80
SFH46-ST	SFH46-SS	SFH46-BR	46X54	100	80	11	65	65	46	16	4	100

SPLINE SHAFT CLAMP COLLAR HUB

MATERIAL: C45 Steel, 1.4305 Stainless Steel & GC-CuSn7ZnPb Bronze .
With Mounting Holes - SIZES IN MM



STEEL PART#	STAINLESS PART#	BRONZE PART#	PROFILE	A	B	B1	C	d-H7	L	K	T	S
SCH11-ST	SCH11-SS	SCH11-BR	11X14	42	28	4.5	20	11	12	2	4.6	M4
SCH13-ST	SCH13-SS	SCH13-BR	13x16	50	36	4.5	22	13	12	2	4.6	M4
SCH16-ST	SCH16-SS	SCH16-BR	16X20	52	38	5.5	25	16	14	2	5.7	M5
SCH18-ST	SCH18-SS	SCH18-BR	18X22	54	40	5.5	30	18	14	3	5.7	M5
SCH21-ST	SCH21-SS	SCH21-BR	21X25	62	48	6.6	35	21	14	3	6.8	M5
SCH23-ST	SCH23-SS	SCH23-BR	23X28	64	50	6.6	35	23	15	3	6.8	M6
SCH26-ST	SCH26-SS	SCH26-BR	26X32	70	56	6.6	40	26	15	3	6.8	M6
SCH28-ST	SCH28-SS	SCH28-BR	28X34	78	60	9	46	28	18	3	9	M8
SCH32-ST	SCH32-SS	SCH32-BR	32X38	82	65	9	50	32	18	3	9	M8
SCH36-ST	SCH36-SS	SCH36-BR	36X42	90	70	9	52	36	18	3	9	M8
SCH42-ST	SCH42-SS	SCH42-BR	42X48	95	75	11	60	42	22	3	11	M8
SCH46-ST	SCH46-SS	SCH46-BR	46X54	100	80	11	65	46	24	3	11	M8