

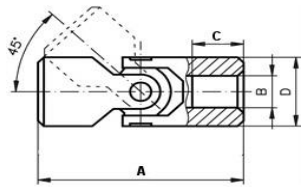


UNIVERSAL JOINTS

LOW COST

Also Available
Optional Keyways
Custom Bores Sizes
Plastic Universal Joints

Steel- Similar to DIN 808. These low-price, single universal joints are especially suited for manual operation at low torques. As the contact surfaces are not hardened/ground, they can

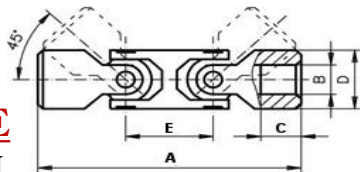


SINGLE

SIZES IN MM

PART#	B - H7	D	A	C	Permissible max. Torques in Nm at different speeds							Weight (kg)	
					min -1	100 (Nm)	200 (Nm)	300 (Nm)	400 (Nm)	500 (Nm)	700 (Nm)		800 (Nm)
ULC6S	6	13	40	13		6,6	6	5,3	4,8	4,4	x	x	0,03
ULC8S	8	16	40	10		13	9	8	7	6	5,2	4,7	0,04
ULC10S	10	20	45	10		25	17	15	12	11	10	7	0,08
ULC12S	12	25	50	11		45	25	21	16	14	11	9	0,14
ULC14S	14	29	56	13		70	45	40	33	30	26	22	0,20
ULC16S	16	32	65	15		88	85	72	55	50	43	34	0,29
ULC18S	18	37	72	17		160	120	100	68	58	54	x	0,44
ULC20S	20	40	82	19		240	170	120	90	80	72	x	0,57
ULC20S	22	47	95	22		300	200	150	110	93	x	x	0,93
ULC25S	25	50	108	27		390	250	180	140	115	x	x	1,19
ULC30S	30	58	122	30		430	330	200	150	128	x	x	1,72

Max. Operating Angle 45°



DOUBLE

SIZES IN MM

PART#	B - H7	D	A	E	C	Permissible max. Torques in Nm at different speeds							Weight (kg)	
						min -1	100 (Nm)	200 (Nm)	300 (Nm)	400 (Nm)	500 (Nm)	700 (Nm)		800 (Nm)
UL6D	6	13	63	23	-		5,9	5,4	4,8	4,3	3,9	x	x	0,07
UL8D	8	16	67	27	-		11	8,1	7,2	6,3	5,4	4,7	4,2	0,07
UL10D	10	20	74	29	-		22	15	13	11	9,9	9	6,3	0,08
UL12D	12	22	74	29	11		40	22	19	14	12	10	8,1	0,13
UL14D	14	25	85	33	13		63	40	36	29	27	23	20	0,19
UL16D	16	29	100	35	19		79	76	64	49	45	38	30	0,31
UL18D	18	32	112	39	20		144	108	90	61	52	48	x	0,44
UL20D	20	40	128	46	19		216	153	108	81	72	64	x	0,82
UL22D	22	40	145	46	25		270	180	135	99	83	x	x	0,94
UL25D	25	50	163	59	24		350	225	160	126	103	x	x	1,56
UL30D	30	58	182	66	28		380	295	180	135	115	x	x	2,43

Max. Operating Angle 90°