

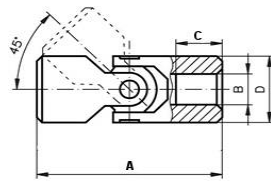


Also Available
Optional Keyways
Custom Bores Sizes
Plastic Universal Joints

UNIVERSAL JOINTS- PRECISION STAINLESS STEEL

Stainless steel 1.4301. These single and double universal joints feature a simple design with very small tolerances, high precision and performance. These universal joints can be used at speeds up to max. 800 rpm. The torques of the stainless precision universal joints amount to less than the precision steel version.

SINGLE

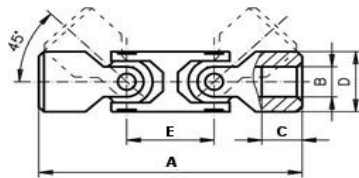


SIZES IN MM

PART#	B - H7	D	A	C	Permissible max. Torques in Nm at different speeds								Weight (kg)
					min -1								
					100 (Nm)	200 (Nm)	300 (Nm)	400 (Nm)	500 (Nm)	700 (Nm)	800 (Nm)		
USS6S	6	13	50	18	3,5	3,3	3	2,8	2,5	x	x	0,04	
USS8S	8	16	58	19	7	5	4,8	4	3,5	3	2,7	0,04	
USS10S	10	22	76	25	12,5	8,5	7,3	6,5	6	5,5	3,8	0,13	
USS12S	12	25	86	29	21,5	12,5	10,3	8,5	7,8	6,5	6,0	0,23	
USS14S	14	29	90	30	34,3	21,5	19,8	18	16,8	14,3	13,3	0,33	
USS16S	16	32	95	30	43,3	42	36	28,8	25,8	20,5	18	0,42	
USS18S	18	37	108	35	78	60	48	36	30	29	x	0,65	
USS20S	20	40	108	32	120	84	60	48	42	30	x	0,75	
USS22S	22	47	127	38	150	96	72	60	48	36	x	1,26	
USS25S	25	50	140	44	192	120	84	72	60	48	x	1,52	
USS30S	30	58	178	58	216	132	96	78	66	x	x	2,60	

Max. operating angle 45° - At an operating angle of 45° only manual operation is possible.

DOUBLE



PART#	B - H7	D	A	E	C	Permissible max. Torques in Nm at different speeds								Weight (kg)
						min -1								
						100 (Nm)	200 (Nm)	300 (Nm)	400 (Nm)	500 (Nm)	700 (Nm)	800 (Nm)		
USS12D	12	22	105	29	25	11,3	7,7	6,5	5,9	5,4	5,0	3,4	0,20	
USS14D	14	25	119	33	29	19,4	11,3	9,2	7,7	7	5,9	5,4	0,30	
USS16D	16	29	125	35	30	30,8	19,4	17,8	16,2	15,1	12,8	11,9	0,43	
USS18D	18	32	134	39	30	38,9	37,8	32,4	25,9	23,2	18,5	16,2	0,56	
USS20D	20	40	154	46	32	70	54	43	32	27	26	x	1,06	
USS22D	22	40	176	46	38	108	76	54	43	38	27	x	1,16	
USS25D	25	50	199	59	44	173	108	76	65	54	43	x	2,16	
USS30D	30	58	244	66	58	194	119	86	70	59	x	x	3,48	

Max. operating angle 90° - At an operating angle of 90° only manual operation is possible.